

MONOLITHIC ISOLATION JOINTS

2.2.2



SIZE RANGE: from 0.5" to 48"

RATING CLASS: from ANSI 150 to ANSI 2500

CHARACTERISTICS GUARANTEED FOR STANDARD JOINTS:

- **MAX OPERATING PRESSURE:**
equal to the Nominal Pressure (PN/ANSI rating)
- **TEST PRESSURE:**
times the Design Pressure
- **OPERATING TEMPERATURE:**
to 160°C for high temperatures (high temperature on specific request up to 260°C)
- **OPERATING TEMPERATURE:**
to +70°C for normal temperatures
to 160°C for high temperatures (higher temperature on specific request up to 260°C)

ELECTRICAL TESTS IN DRY AIR AT 25°C:

- **DIELECTRIC STRENGTH TEST:**
3000 v AT 50Hz A.C. FOR 1 MIN.
- **ELECTRICAL RESISTANCE TEST :**
> 5 M - 1000 V d.c.

MATERIAL USED:

FERROUS MATERIALS:

- Carbon steel in its various grades

NON-FERROUS MATERIALS:

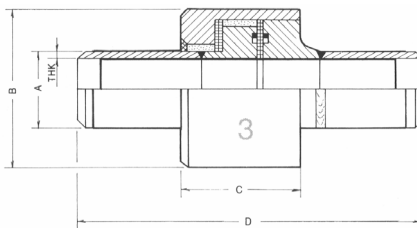
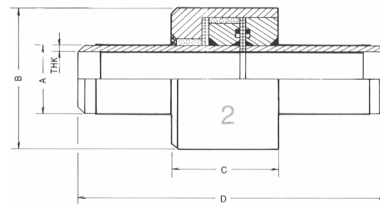
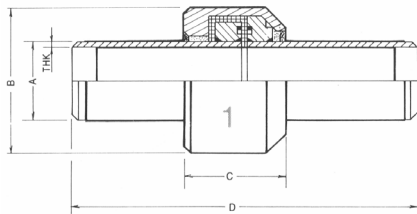
- Stratified epoxy resin and glass fibre Class G10-G11
- Sealing O rings suitable to meet working temperature and fluid conveyed.
- Filling epoxy resin
- Epoxy resin for internal/external coating (70µ DFT)



Monolithic Isolation Joints Continued

2.2.2

NPS	ANSI 150						ANSI 300						ANSI 600					
	INC"	A	B	C	D	THK	Kg	A	B	C	D	THK	Kg	A	B	C	D	THK
1/2	21.3	60	44	300	3.25	0.9	21.3	60	60	300	3.25	1	21.3	60	60	300	3.25	1
3/4	26.7	60	44	300	3.25	0.9	26.7	66	60	300	3.25	1.3	26.7	66	60	300	3.25	1.3
1	33.4	64	47	300	3.38	1.2	33.4	76	60	300	3.38	2	33.4	76	60	300	3.38	2
1 1/4	42.4	77	50	300	3.56	1.8	42.4	82	70	300	3.56	2.5	42.4	82	70	300	3.56	2.5
1 1/2	48.3	90	54	300	3.68	2.4	48.3	95	80	300	3.68	3.5	48.3	95	80	300	3.68	3.5
2	60.3	102	60	400	3.91	4.1	60.3	108	85	400	3.91	6	60.3	108	92	400	3.91	6
2 1/2	76.1	114	62	400	4.50	4.8	76.1	128	88	400	4.50	8.5	76.1	127	96	400	4.50	7
3	88.9	127	65	400	4.78	6.3	88.9	140	100	500	5.49	10	88.9	146	121	500	5.49	15
4	114.1	154	70	400	4.78	9.1	114.1	159	110	500	6.02	14	114.1	177	132	500	6.02	22
5	141.3	194	80	500	4.78	14.5	141.3	198	130	500	6.55	26	141.3	203	141	600	6.55	31
6	168.3	230	95	500	5.56	21	168.3	229	136	600	7.11	37	168.3	240	147	600	7.11	43
8	219.1	273	100	500	6.35	31	219.1	289	138	600	8.18	57	219.1	293	158	600	8.18	66
10	273.0	343	131	700	6.35	46	273.0	350	143	700	9.27	85	273.0	362	179	700	9.52	107
12	323.9	395	135	700	7.14	78	323.9	400	151	800	9.52	114	323.9	415	201	900	9.52	151
14	355.6	430	138	900	7.92	114	355.6	440	157	900	10.31	144	355.6	450	208	1000	9.52	214
16	406.4	483	143	900	7.92	133	406.4	490	162	1000	12.70	205	406.4	505	219	1000	12.70	231
18	457.2	525	158	1000	7.92	156	457.2	546	176	1000	12.70	224	457.2	568	244	1000	12.70	295
20	508.0	600	172	1000	7.92	217	508.0	604	193	1000	12.70	268	508.0	630	255	1000	12.70	370
22	558.8	645	178	1000	9.52	248	558.8	655	198	1200	14.27	347	558.8	688	278	1200	14.27	480
24	609.6	700	187	1000	9.52	292	609.6	720	204	1200	15.88	442	609.6	748	290	1200	14.27	585
26	660.4	750	200	1000	9.52	335	660.4	776	214	1200	15.88	522	660.4	813	306	1300	15.88	780
28	711.2	810	208	1200	9.52	380	711.2	830	221	1200	17.48	611	711.2	868	331	1300	19.05	885



BAC can supply a complete range of monolithic isolating joints used for the sectioning of main and service pipelines (gas, oil, water), to ensure cathodic protection and electrical safety in major pipeline projects all around the world.