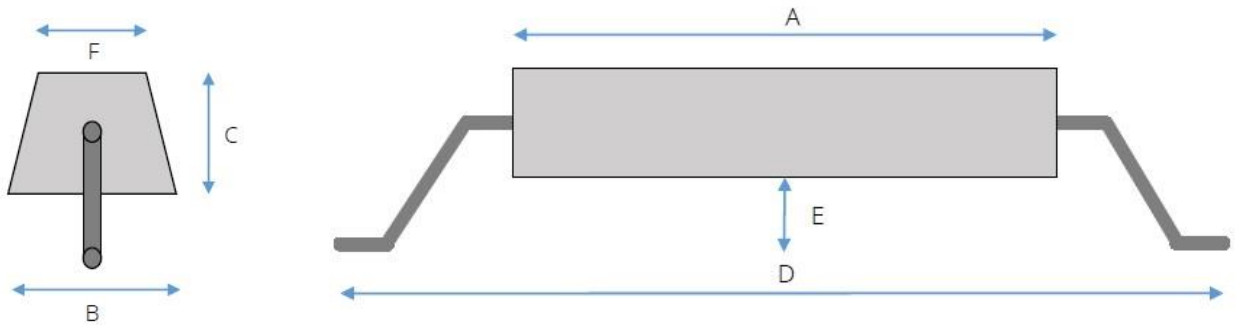


MAGNESIUM ANODES TANK TYPE

Magnesium Anodes for tank / vessel internal / external protection applications. Anodes can be supplied in a range of sizes, weights and chemical composition to suit your application. Typically a round or flat bar steel insert is provided with a double crank arrangement for direct welding to the structure.

Should you require an alternative design we can always offer against your specific requirement.



ALLOY COMPOSITION

Specification ISOMAG (1.7V)

Manganese 0.5 - 1.3%
Aluminium 0.010% max
Copper 0.02% max
Iron 0.03% max
Nickel 0.001% max

Total any other single impurity 0.05% max
Total of all other impurities 0.30% max
Magnesium Remainder

Potential (Ag/AgCl reference) 1.7 volts
Capacity (Ampere hours) 1230 A/hr/Kg

Specification:

Aluminium Alloy Net weight	kgs
A Length	mm
B Width	mm
C Height	mm
D Insert Length	mm
E Stand Off Height	mm
F Width	mm

DATASHEET 1.2

MAG ANODES



Specification ISOROD (1.5V)

Aluminium 5.3 - 6.7%
Zinc 2.5 - 3.5%
Manganese 0.25% min
Iron 0.005% max
Silicon 0.30% max
Copper 0.08% max
Nickel 0.003% max
Total of all other impurities 0.30% max
Magnesium Remainder

Potential (Ag/AgCl reference) 1.5 Volts
Capacity (Ampere hours) 1230 A/hr/Kg



BAC[®]

CORROSION CONTROL

BAC Corrosion Control Ltd
Stafford Park 11 • Telford • TF3 3AY
United Kingdom

T: +44 (0) 1952 290 321
E: sales@bacgroup.com
W: www.bacgroup.com