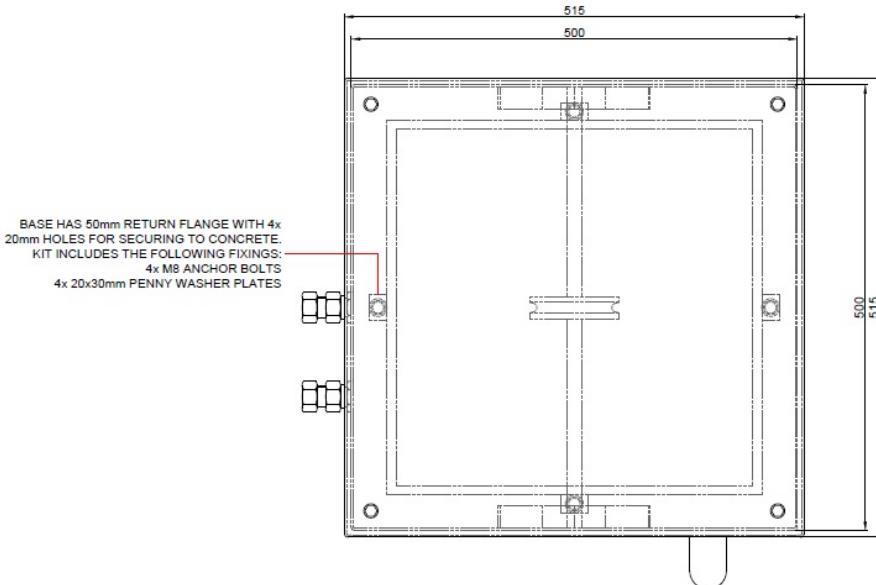
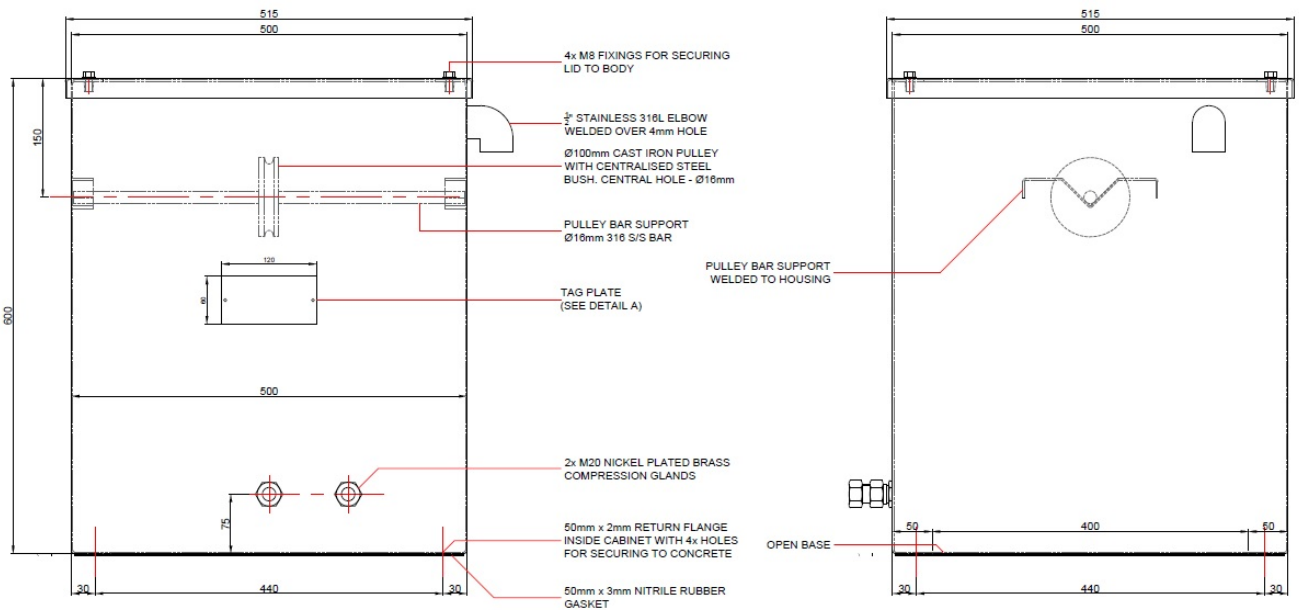


# WELLHEAD ASSEMBLY FOR ANODE GROUNDBED

# DATASHEET

## WELLHEAD ASSEMBLY

Stainless Steel wellhead structure for support of anode strings over a deepwell borehole grounded. Structure supplied with an internal roller assembly for tying up support ropes and anode cables and a vent system for dispersion of chlorine gas.



**BAC**<sup>®</sup>  
CORROSION CONTROL

BAC Corrosion Control Ltd  
Stafford Park 11 • Telford • TF3 3AY  
United Kingdom

T: +44 (0) 1952 290 321  
E: sales@bacgroup.com  
W: www.bacgroup.com