

POWER FEED CONNECTORS

DO NOT SCALE

STRIP
No.1
EQUI-SPACED
MMO RIBBON

CABLES TO BE RUN IN
PVC DUCT THROUGH
CONCRETE RING BEAM

ANODE CABLE TAILS

REFERENCE
ELECTRODE

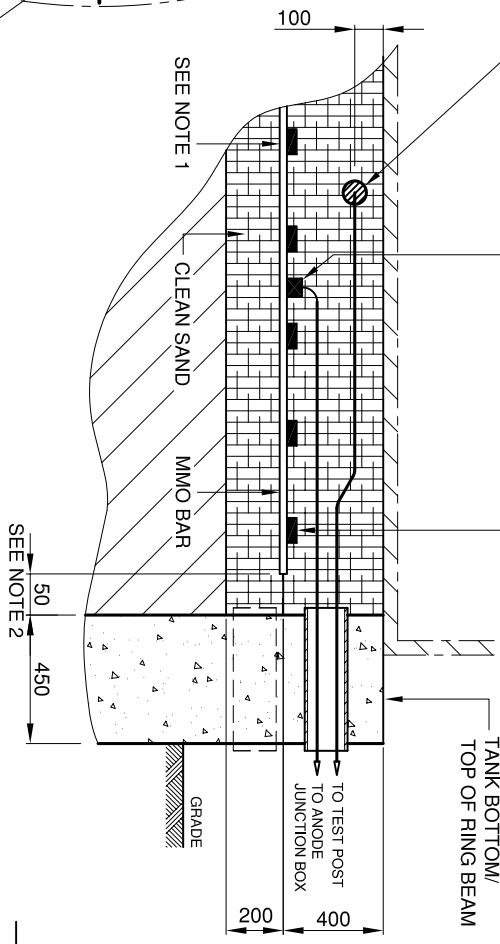
POWER FEED
CONNECTOR

CONDUCTOR
FLAT BAR

TANK BOTTOM/
TOP OF RING BEAM

FIRST ISSUE ON RELEASE NOTE
RN

REVISION



PART SECTION THRO GRID LAYOUT

BAR
No.1 + 'X'

TITANIUM
CONDUCTOR BAR
MMO RIBBON
SPOT WELD TO
CONDUCTOR BARS

NOTES

1. MMO BAR TO BE SPOT WELDED TO TITANIUM CONDUCTOR BAR AT ALL JUNCTION POINTS.
2. THE END OF EACH MMO ANODE STRIP TO FINISH 50mm FROM INTERNAL RING BEAM SURFACE.
3. RIBBON & CONDUCTOR SPACINGS AS PER BAC DETAILED DESIGN.



CORROSION CONTROL
STAFFORD PARK 11
TELFORD
TF3 3AY
UNITED KINGDOM
PHONE : +44 (0) 1952 290321
FAX : +44 (0) 1952 290325
EMAIL : sales@bacgroup.com
engineer@bacgroup.com
website : www.bacgroup.com

UNDER TANK MMO GRID SYSTEM

DRAWN	DGT	DATE 07/04/04	MATERIAL	SHEET 1 OF 1
CHECKED	DJ	DATE 15/04/04	THIS DRAWING IS THE PROPERTY OF BAC CORROSION CONTROL LTD. IT MUST NOT BE COPIED, USED FOR MANUFACTURE OR OTHERWISE DISCLOSED WITHOUT THE PRIOR ARRANGEMENT OF THE COMPANY.	SCALE NTS
REVIEWED	DM	DATE 16/04/04		STD DRAWING S 013
APPROVED	APG	DATE 16/04/04		REV 0

